

RESEARCH-1933

INSCRIPTION UNDER 1933 PAINTING

THE HUNGER MARCH

9:00 AM

TUESDAY, JAN. 17, 1933



QUOTE ABOVE THE NARRATIVE

"We can't sit back and starve." "I've been out of work three years." Of course there have been some small jobs, but no real money. I've tried hard to find work too." "I used to earn six dollars a day. Now they pay \$3, but there ain't no jobs."

Hunger Marcher interviewed by The Daily Olympian 1-18-33.

BUILDINGS AND HOMES IN VIEW THAT WERE TORN DOWN, MOVED OR BURNED SINCE 1899 (N TO S)

- 1) Olympia Collegiate Institute- (block bordering Plum, Pear, 1st & 2nd) (built 1875, torn down in the 1920s (#133)(#23p264 says there was a fire in Dec 1913 that caused extensive damage)(see past references, also Union Academy)
- 2) First Garfield School(nw cor Madison & Rogers)(built 1893-1929, replaced with mission style bldg a few blocks south which opened in 1930)#133(pic #99HX5) See Garfield timeline in "written '99" file. (There was one previous westside school but it was not of this stature.)(current Garfield opened in 1990)
- 3) New England Hotel (aka Washington, Huggins, Youngs) (se cor Cap Wy & Olympia Ave)(torn down in 1917 #23p290)(see all previous)
- 4) Gold Bar- (mid block bet State and Olympia on Cap Wy)(blt 1852, moved in 1903, torn down 1911)(see all previous)
- 5) Gurney Livery (nw cor State & Cap Wy) (till 1912 when site becomes Fire Hall)(see previous)
- 6) Pacific House (ne cor State and Cap Wy)(razed in 1902)(see previous)
- 7) Burmeister Building (se cor State & Cap Wy)(blt 1884, torn down in 1932 to make way for Olympian Bldg.)(pic #23p357)(see previous)
- 8) Former Warbass Home (near se cor State and Wash) replaced by Knox Hotel (see later)
- 9) Former Thomas Prather Home (2nd house n. on 4th & Wash w side, south of the alley- 323 Wash) Gone by 1924 Sandborn.
- 10) Good Templars (sw cor Columbia & 4th) (about 1861 to about 1914. several fires, site became concrete Barnes Bldg 1914)(see previous)
- 11) Former Burmeister Home and Saloon (ne cor 4th and Wash)(replaced by old Thurston Co Courthouse blt in 1900) (see later and previous)
- 12) Columbia Hall-(4th bet. Wash & Franklin)(1869-burned 1914, #19p45)(replaced by Columbia Bldg in 1914)(see previous)
- 13) Former George Barnes Home (was near se cor 4th and Adams. moved to se cor Jefferson & 6th. #54p4 , a short distance back from corner)(see previous)
- 14) Opera House- (mid block facing 4th bet Jeff & Cherry south side)(blt 1890-torn down in 1925 due to movie theaters #19p73)(see previous)
- 15) Wood Home, brewery and cooperage (near ne cor 5th & Col)(blt 50s & 60s, torn down in 1908)(see previous)
- 16) Former Elwood Evans Home (nw cor 5th & Main)(Replaced by Funk Volland in 1909) (see

- previous and 1950 written file)
- 17) Former Tilly Home (nw cor 5th & Wash) replaced by Ray Theater (theater in '24 Sandborn I think__)
 - 18) Former Reed Home (n. of Reed Block on Wash. St. moved and remodeled)(see previous)
 - 19) Former Parker Home (was at sw cor 5th & Franklin, by 1924 Sandborn it had been modified and moved a little south to mid block)What is there in 1933?__
 - 20) Pioneer Schoolhouse/ Courthouse/Formal Olympian Bldg(1855-probably late 40s, but moved)(formerly near nw cor 6th & Franklin, moved to se cor State and Adams just north of the alley according to info on back of pic #33NX4 and aerial pic #50B from 1946 and '46 Sandborn. Then by Seattle Times photo 4-30-50 it's gone.)(Also M.O. Feb 13, 1908 says moved to Adams location)(Also pic from YMCA collection shows urban tennis courts on this site in the mid twenties I think)(In late 1907 it became club house and labor temple of Olympia Trades Council. Dedicated 2-13-08 at new site. See 1933 written file)
 - 21) Former Peterfield Turpin Home-(nw cor Legion and Main)(replaced by Penneys)(see previous)
 - 22) Former Tarbell/Lawson Home (nw cor 6th & Wash)(replaced by Hotel Olympian opened 1920)(see previous)
 - 23) Former Talcott Home-(sw cor Legion & Main)(replaced by Talcott Bldg in '23)(see previous)
 - 24) Clock Tower on old capitol building burned Sept 8, 1928. (Conflict:#19p83 and p187 says razed after '49 earthquake)Yet clocktower gone in #33GG & #33HH photos from '29 and '30. Also Lars Carlson who was the architect and manager for replacing the towers after the 49 earthquake says clock tower was gone. Conclusion: #19 meant to refer to other towers that went down in the '49 earthquake. Clocktower gone soon after '28 as per photos. Tower story-#23p342-343 valiant help from Tacoma fire fighters
 - 25) Sylvester Park Bandstand torn down in 1928. #2p37, #23p343, #136 (#151 said there had been an attempt to burn it which only partially succeeded) (Conflict: "Sylvester Park gazebo gone about 1917" #133. Also D.O. 8-9-83 says no gazebo from late 20s to 1976, incorrect.) Conclusion- Go with #23. New bandstand designed by Wohleb dedicated Aug. 13, 1931(see Olympian 8-14-31 front page. Unknown as to when it came down)
 - 26) Former Episcopal Church (nw cor 7th & Cap Wy)(probably built late 1850s by Harned, gone about 1902)(see 1899)(became Mitchell Hotel)

BUILDINGS AND HOMES OUT OF VIEW AND TORN DOWN, MOVED OR BURNED SINCE 1899 PANEL- (N to S)

- ?1)First Wash. School which was moved to 5th & Eastside in 1889 when the new school was built on the site. Was razed in 1929 accord. to Olympian 10-17-29)__
- 2) Old Presbyterian Church (was at se cor 6th & Franklin. Replaced in 1909 by new one) See pic #33___ (previous info)
- 3) Farquhar Store (7th & Adams)(1890-?)Store housed 1903 legislature #23p197
- 4) Olympia Hotel (bet. 7th & 8th on w. Cap. Wy) (blt 1889, burned in 1904)
- 5) GAR Bldg-(was on Mowell property) torn down 1929 accord to Olympian 10-27-29 in written '99 file.
- 6) Isaac Stevens Home (1856-1929 #133)
- 7) First St. Peter Hospital (at totem, n. side Cap. Campus #133)(blt 1887, down in 1920s)
- 8) First Wm. Winlock Miller High School (site of rose garden Cap. Campus#133, #19p125)(blt 1907-burned in 1918)(pic ref #99HX5)
- 9)First Capitol Bldg (where se handicapped entrance of Legislative Bldg is today)(Blt in 1855,

- gone by 1903)
- 10) First Lincoln School (blt 1891, torn down in the 1920s (#19p81)
 - 11) Crosby Mill- 1861-1904 (#133)
- IMPORTANT BUILDINGS AND HOMES IN VIEW AND STILL STANDING SINCE 1899
(N to S)
- 1) Seven Gables House (1205 Westbay Dr NW . Built 1893 to present. #16p90 (too distant to be visible but in the scope of the painting.)
 - 2) Giles Home(727 West Bay Dr)(blt 1885 to present)
 - 3) Bigelow Home (918 Glass Ave NE)(about 1854 to present)pic #56A
 - 4) Ruddell Home (901 Olympia Avenue)(about 1866 to present)
 - 5) Jefferson Apartments (From 1933 panel on, near se cor State and Jefferson, facing Jefferson. -In 1899 was Allen House Hotel facing south bet. 3rd and 4th)(Built 1892 to present)#6p29 (pic) says continuous use as apts. for more than 100 yrs.
 - 6a) Labor Temple (Woodruff Block)(near sw cor Cap Way and State) (1887 to present)(see previous)
 - 6b) Tea Leaf III- (see 1899 info)
 - 6c) Browsers Bookstore- (see 1899 info)
 - 7) Olympia Hardware Bldg. (mid block bet 4th & State on w Cap Wy)(1884 to present)(#143 has it at 109 N. Cap Wy in 1933) #2p22
 - 8) Barnes Bank (mid blk bet. 4th & State on Cap Wy)(1870 to present)
 - 9) Carlton Hotel- (facing Columbia bet. State & 4th)(1873-raised in 1948)now a bootleg joint #23p356 (according to News 52 article, 2-5-86, frequent raids during prohibition, last name was Hutson Hotel. Several fires and rebuilding, but business remained at this site)(Good pic #154 rack 100).
 - 10) Angelus Hotel (nw cor 4th & Columbia)(approx. 1897 to present, half story added about 1929)see 1899 written file.
 - 11) Mottman Mercantile Co. (nw cor 4th & Cap Wy)(blt 1883 for Toklas & Kaufman. Still standing, 3rd story added 1910)(#143p20 "Only big independent store left in Oly" tel:125, clothing, furnishings, carpets, dry goods)(good article #148p4)
 - 12) Chambers Bldg (ne cor 4th & Cap Wy)(1887 to present)(In 1933 it's Rexall, pic#33XX)
 - 13) Oxford Saloon (demolished to make way for the Spar Restaurant in 1935)pic #33-0X6. Wooden, single story. I believe this was in business in 1899 panel (see pic #01RX3 for Spar in 1980s and info)See #36 and pic #99CX3. Built about 1865.
 - 14) Bettman Block (nw cor 4th & Adams) (blt ? before 1896)(see SCHS pic #18, damage in '49 quake)___
 - 15) Kneeland Hotel (sw cor 4th & Cap Wy, 107 1/2 4th Ave W.)(Blt 1891, McKenny Block, till 1949 earthquake)(slipped to second rate status in 30s. #23p356, #143 shows barber shop also in this bldg in 1932)
 - 16) Hale Building (ne cor 4th & Jefferson, facing 4th)(Built 1891 to present, according to current owners)(Housed JE Kelly before they moved to Lynch Bldg)pic#990X6, #99WX6 and #33V (Currently Antique store. Windows and walls being renovated)
 - 17) Former United Presbyterian Church (sw cor 4th & Jefferson)Accord. to Daily O article 6-28-01, The Westminster Presbyterian Church had moved out Jan 5, 1927 and Salvation Army moved into bldg in 1932. (Bldg is gone by 1950 aerial)#45p47pic
 - 18) Cunninghams (sw cor 4th & Adams)(blt 1896 to present)In 1932 it's the Commercial Hotel #143
 - 19) Pacific Building (former Chilberg Bldg) (3 stories)(bet 4th & 5th on Cap Wy, n. of Talcotts, 406 Cap Wy)(Blt before 1896-until 1949 quake)(Lowman & Hanford and Pacific Apts there in 1932 #143. Lowman is only bookstore, telephone#1!)#85p47pic

- 20) Talcotts (mid block bet 4th & 5th on Cap Wy #420)(blt 1872 to present)
- 21) Crane's Cafe Bldg (w side of Main mid blk bet 4th & 5th)(see previous info)___
- 22) Olympia Building and Loan Bldg (409 Cap Wy)(This is early Oly Fed. They moved here in 1924 until after the '49 quake when interim bldg completed, until 1967 and '78 when current one blt.)See written '33 file. (next bldg s. of Crane's Cafe)(see previous info)___
- 23) Percival Home (west end of future 5th Ave bridge) (I believe this is the Maxwell Maternity Home in the '32 Directory, listed at 723 4th Ave W. Still operating at this location until at least Lola Maxwell's death in 1936-see obit.)(This home stands until late 1940s)
- 24) Oddfellows Building (sw cor 5th & Cap Wy)(blt 1888 burned in 1936)(#143 IOOF Hall 503 Cap Wy. Also Rainier Hotel same address)
- 25) Harris Drygoods (bet. 5th & Legion, at 510 Cap Way)(moved to this location before 1900. Will sell to Millers in next panel #19p87)#143
- 26) Former Dr. Waughop office (mid block w. side of Cap Wy bet. 5th & 6th)(see previous)
- 27) Reed Block (ne cor Legion & Wash)(1891 to present)(#143, North Coast Transportation Co. and Thompson Apts. there in 1933.)(Post office moved to Fed Bldg in Jan 1915 #24p115)(pic #85p57)
- 28) Stuart Block (ne cor Legion & Cap Wy)(1891 till 1948, to make way for Millers)(#143, in 1933 its Crombies Pharmacy Drugs and Sundries, also selling Kodaks, 524 Cap Wy. Also Stuart Hotel 106 Legion Wy)
- 29) Old Courthouse/Capitol Building with addition to the east completed in 1905. (Taken over by state in 1901)(Original courthouse blt 1892 to present)
 - a) In 1933 this building houses the following- (#143)
 - 1)Archives 2)Commisioner of Public Lands 3)Dept of Agriculture 4)Dept of Conservation and Development 5)Dept of Education 6) Dept of Public Works

BLDGS & HOMES OUT OF VIEW & STILL STANDING SINCE 1899 PANEL(N to S)

- 1) First Wash School (site of current Armory)built 1891 and not razed until 1938, replaced with mission style bldg. across street in 20s #133)(pic #19p81, also pic #99HX5)
- 2) McElroy Home-(according to pic #50SS from Seattle Times pic 4-30-50)
- 3) Sylvester Home-(see previous and later)
- 4) Providence Academy (ne cor 9th & Columbia)(blt 1882, became St. Mike's School. Torn down in the 60s #133)#19p59

NEW BUILDINGS IN VIEW IN 1933-(N to S) * indicates a Wohleb design

NEW NORTH OF STATE AVE

- 1a) See "mills and factories" for new Westbay Dr. buildings
- 1b) 2nd Garfield School-(2 blks south of first school location)#1Ap56. Built 1929, formally accepted by board Feb. 1930. Stood till 1989 when present Garfield built. (#2p87pic) Also see Garfield timeline in "written '99" file(barely visible in panel)
- 2) Port Pier and small cold storage bldgs. (see "Infrastructure-port facts". 1926 new pier and plans underway for warehouse and cold storage bldgs also this year #23p332)
- 3) Olympia Veneer, Wash. Veneer, and lumber companies on Westbay Dr. (see Mills)
- 4) Olympia Canning Co. (#140 shows one building in 1933, on south half of block bet. A&B & Cap Wy and Columbia)(This will later spread to another bldg across Cap Wy with an aerial walkway bet.)(started in 1913 according to #85p18)(The Cannery will later become Yard Birds)(#167 says began in 1916. See photo #50UUU)
- 5) Buckeye Extract blt 1908-1972 (I think)#23p221. Bet State and Olympia on W. Cap Wy
- 6) Ziegler's Welding (322 Cap Wy N) pic #33ZX7. (can't see but in scope of painting)Est in 1910 as a coal shed or "dragging shed" Ziegler's began in 1927.

NEW STATE AVE (west to east)

- 1) Bayview Hotel (se cor Water and State)('32 Directory says 223 State Ave W.)(Former

- Creamery site just south of Bayview Hotel. Cold Storage bldg on corner not constructed till 1944.)source____pg 76. pic#33AX4. (when opened?____)pic #33PX7 shows Bayview Hotel and Creamery
- 2) Olympia Fire Hall/ City Hall (nw cor State & Cap Wy)(opened June 5, 1912 to present, Columbia Hall was vacated June 1, 1912) #133, #19p122 (Olympia Justice Court is here in 1933-see #143. Julia Ker's 1st case at older city hall on May 22, 1912) (currently Oly Childcare Center)
 - 3) *Daily Olympian Bldg. (se cor State & Cap Wy)(Blt 1932 to present) stucco and tile, Wohleb design #23p356, #148p7, #143 (currently Cap. City Press)
 - 4) Knox Building (where Warbass Home was, se cor State & Wash.)(Blt 1908 till '66) #79p182pic(#143 Knox Hotel & Apts 114 N Wash)pic#33SS and panorama pic#50B, also panorama pic circa 1928.(#23p221)(currently a parking lot)
 - 5) Hyak Lumber Co. (ne cor Adams & State)(#46 Sandborn and pic #33S)Blt 1928, razed____
NEW FOURTH AVE (west to east)
 - 1) New concrete 4th Ave Bridge-blt 1921 (see "Bridges, Wharves...")
 - 2) JJ Brenner Oyster Co. (502 4th Ave W. on n. side of 4th before bridge)(blt____)wholesale oysters and clams (Charles Brenner oyster grower began 1893. Obit 2-11-51)
 - 3) Olympia Yacht Club-opened in 1930 (#111 and pic #33YX7)
 - 4) Olympia Oyster Co (320 4th)(currently Oyster House Restaurant) #143. Wohleb design. Blt 1923, burned 1946, rebuilt. See #135
 - 5) Copeland Lumber Co (302 4th Ave W, 4th and Water)(blt____)#143. In 1946 Sandborn(Believe it came down in the 70s and was replaced by Percival Landing Boardwalk)(Was just e. of current kissing statue)#85p36pic. Pic #33AX5 & #33UX3
 - 6) Wright Building (ne cor 4th & Water)(Blt 1908 to present)#11p19. #76p19 (Currently Childhood's End Gallery)
 - 7) Barnes Building (sw cor Columbia & 4th. 211 W 4th. Formerly Good Templars site)(built 1914 to present). Barnes first business in 1889 was grocery.(#143, in 1933 Barnes Seed Co. see pic #33LL. Sold feed, seed and pets)#11p30 (Barnes and Bowen Grocers pictured in 1925 #85p21)Palladian windows. (Current Danger Room & Barnes Floral)
 - 8)*Capitol National Bank Building (se cor 4th & Capitol Way)(blt 1922 to present. Concrete and stone) for C. Lord.#11p37 (Cap Nat Bank in 1932 #143 pic p18) #85p59pic. #23p310 (although #23p341 says purchased in 1928 by Marine Bank of Seattle) (currently U.S. Bank)Wohleb design.
 - 9) Boardman Building (nw cor 4th & Wash.)(blt 1925 to present) (Current Dancing Goats)_
 - 10) Old Thurston County Courthouse (ne cor 4th & Wash.)(1900-1934)(site is currently State Theater box office)
 - 11) Columbia Building (sits on Columbia Hall site)(built 1914 to present) #11p26.
 - 12) Security Building (se cor 4th & Wash, 203 4th Ave)(built 1926 to present)#6p38-39,(#143 mostly professional offices, Thur. Co. Savings and Loan)(Sullivan-esque style of brick masonry)(Named for Security Bank that once stood on the site. #111 in written '33 file. Was on tidelands before 1911)(Also see Sec Bldg Clock article D.O. 1-27-63 in written '33 file. Orig. clock put up about 1929. Hit by car. Second clock came about 1953 & later moved to SS Shopping Center)(currently numerous businesses & offices)
 - 13) White Building (Blt 1908 to present)(next bldg east of Security Bldg facing 4th) #76p20(Currently__)
 - 14) Lemon Bldg-(also called the Safe Deposit Bldg)(nw cor 4th & Franklin)(Blt 1908-? #79p181pic)pic #33VV, Acme Theater at w. end of Lemon Block #94 Listed in '02 directory with typos (uncertain when razed)(aerials show bldg in 1972 but not 1983)__(currently____)

- 15) Rex Building(se cor 4th & Franklin)(Built 1910 to present)(#153 says built by Lemon Family, housed Rex Theater on first floor. Clyde Apts above)(Currently Who Dunit? Books)
- 16) Mills and Mills Funeral Home (mid block on Franklin, just south of Rex Bldg.)(Built 1901 accord to current owners of Mills and Mills)(1915 Jeffers photo shows look of original bldg. Modified about 1950) pic #33BX4.
- 17) *Montgomery Ward Building (317-319 E. 4th)(built 1928 to present)brick, #11p41 pic #33TT, (#143 hdwr, clothes, shoes auto supplies)#6, #76, #23p340 (currently__) Wohleb design.
- 18) Avalon Theater (blt 1928 to present)(n. side of 4th Ave, w. of alley bet. Franklin & Adams)#6p_ (also article by George Warren under "Purely personal-The Avalon in it's heyday.")(#23p340 half block of retail space in addition to central theater.)(currently__)
- 19) Former Union Pacific Freight Depot (se cor 4th & Adams)(Geo. Barnes home site) (Opened Jan 14, 1916 to present, with major alterations to the back, and lobby facing 4th completely rebuilt. See Olympian 1-14-16, #158)(currently Olympic Outfitters)
- 20) Walt's Muffler (current name)(sw cor 4th & Cherry)In 1924 Sandborn
- 21)*Capitol Chevrolet Building(nw cor 4th & Cherry___ 522 E. 4th)(Built 1920 to present) Art deco. #11p35 unusual design for car dealer. Shows importance of cars in the 20s. (#143, Titus Chevrolet in 1933)(Currently Ramblin' Jacks)#85p43. Pics #33VX7 and #33WX6. Wohleb design.
- 22) Kelley Block(later Lynch Paint Building) (se cor 4th & Jefferson- 501 4th Ave E)(built 1925 to present)#11p41. Pic #33UX7, #33TX5. (In 1933 it's Terk's Furn. Co. accord to #143)pic #6p69(currently antique store)
- 23) Olympia Auto Parts (Orca & Johansen Ballet Bldg later)(Orca on 4th, Jo. on Jefferson)Blt 1925 after Opera House demolished. Two bldgs joined.

NEW MID BLOCK BET FOURTH AND FIFTH

- 1) Howey's Grocery-(where Compass Rose is today)there in '33 accord to #85p47, #143__
- 2) Olympia Auto Parts Bldg- (Johansen Ballet Bldg in future)

NEW FIFTH AVE (west to east)

- 1a) Oscar Black Garage (419 Columbia)(and vacant section-423 Columbia)#143. NW cor 5th & Columbia (currently Bank of America)
- 1b) Sticklin's Olympia Garage Co. #143 (ne cor 5th & Columbia)Pic #33LL (blt__) Chrysler sales and service.(in a 1950 photo) (currently a parking lot)
- 2) State House Tavern (built 1904) ___ source__pg 76 pic #33ZZZ.
- 3) Old Penney's Annex (blt 1919) ___source__pg 76 pic #33ZZZ.
- 4)*Funk-Volland Bldg (nw cor 5th & Capitol Way)(1909-Oct '65)#133, #19p100-101pic) (see later info)Elwood Evans home was here(currently Olympia Federal Savings) Wohleb design.
- 5) Olympia National Bank Bldg(Pacific First Federal)(ne cor. 5th & Capitol Way) #11p25. (Built 1914 for Schmidt Family, "bank as temple" style). Restored in 1977.____ (still standing)(currently Wa. Fed. Savings)#85p45pic & imp info. (conflict: D.O. 9-8 74 incorrect date, says 1890 blt) Conc: Blt 1914 due to Sandborns
- 6)Olympia National Bank Annex-(Blt 1926)note-this is corrected from 1947 printed bldg date. (see pic #50XX, pic #33FX3)
- 7)*JE Walker Store and Office Bldg. (se cor 5th & Cap. Way. 500 S. Cap. Way) (Built 1916 to present) #11p31.(was Pat's Bookery)(Currently Panowicz Jewelers and MSGS Architects)(pic #33Q)Wohleb design.
- 8) Captiol Savings & Loan (nw cor 5th & Wash) #143 (Ray Theater blt in 1914)

- 9a) *Capitol Theater and office bldg (ne cor 5th & Wash)(opened Oct. 1924) Built for Zabel Family, Oly's main theater family #19p135. #11p38. (Piggly Wiggly was just around the corner from the office, facing Wa. in 1933, #143)Good pic #154 rack 96. (currently Capitol Theater) Wohleb design.
- 9b) Pittsburgh Paint Bldg-See 1933 pic file. Replaced in 1963 with Cap Savings and Loan Bldg.
- 10) Martin Building (sw cor 5th & Wash)(built 1920 to present, Chehalis brick#153)#6 (Currently Wind-Up Here)
- 11)*Jeffers Studio (se cor 5th & Wash)(1913 to present) #133 (currently State of the Arts Gallery) #85p53. Wohleb design.
- 12) Donald Building (just east of Jeffers Studio, facing 5th)(built 1924 to present #153)#6(Currently Bucks Fifth Ave and Darbys)#153pic.
- 13) *Olympian Super Service (302 5th Ave)(#143 lists as such)(opened by firm of McLelland and Avery in 1926 #23p332)(Currently Crystal Opticians) Wohleb.
- 14) New Methodist Church (nw cor 5th & Adams facing 5th)(blt 1901, basement added 1913-till quake. Condemned 1949.)320 5th Ave E (currently parking lot)
- 15) Mann's Seed Store (se cor 5th & Franklin)506 Franklin in #143 (Likely blt in late 20s or early 30s since not in '24 Sandborn but in 1932 Directory)(see 1899 info)pic from source #197 (Was the Mann Home)(Currently bldg still stands as Children's Hospital Thrift Store)(pic #33PX8)

NEW MID BLOCK BETWEEN FIFTH AND LEGION (w to e)

- 1) Capital City Creamery (bet 5th & Legion on west Columbia, 509 Columbia)(blt__)(company established about 1905)#143 (mnfctrs of ice cream, mlk, cream and butter)pic #33LL(1931 ad "remember us when the cows come home")#85p44.
- 2) Eads Transfer (south of Cap. Creamery on west Columbia bet. 5th & Legion) #85p27. pic#33LL. #167p64pic. (This business took over Merchants Delivery & Transfer Co. in 1915 at this site. W.G. Eads and son Ted.
- 3)Neuffer Block-(south of alley bet 5th & Legion, w. side)
Business est. 1890, 1st store on 4th near Wa. St. In 1906 built present Neuffer business block. One of Oly's first reinforced concrete bldgs. #76, #42p6 (see pic #33CX8 & #33IX2 plus info)(Wasn't remodeled till 1958)(Also see written '33 file-D.O. 1-27-63 about Neuffer clock there since 1926, which moved to WCPA in the '80s)(In 1933 it's Neuffers on the north, barber just south and florist s. of that) (Currently block includes Florist & Batdorf & Bronson. Neuffers was in Batdorf's spot)
- 4) Household Finance/Merediths Cards (1st bldg n. of alley, across alley from Neuffers. Safeway Bldg in 1950. Mission style. pic#33QX5.(Currently grocery, Simply Australian and Sweet Oasis)
- 5) Harris Drygoods (business located at 510-514 Cap. Way bet. Legion and 5th)Est. 1896 (blt 1899 to present)(will sell to Millers in next panel) #19p87. #85p54. #143 (conflict: #23p341 says Harris sold to Miller Merc. of Oregon in 1928)Conc:#143 shows Harris Drygoods at this location in 1933. (vacant due to earthquake damage)
- 6)*Liberty Theater (mid block bet 5th & Legion on e. Wash)(Opened August 1924 as a vaudeville house. (see 1950 info).#133, #19p134, #11p40) (Olympian article 9-22-85 talks about USO shows during WW2 broadcast from stage. Opening night had vaudeville and silent movies & organ player. 2,000 attended.)Ronald Reagan there in the 40s to publicize a film. (Liberty Garage was next door) #174, #20p40-41, (became Olympic 1948)(Became Wash. Center for the Performing Arts in Sept 1985)Wohleb.
- 7) YMCA (bet 5th & Legion on e. Franklin, 510 Franklin)(north part blt Jan 25, 1910)#143, pic #79p195 (building remodeled '20,'40,'54,'63)(Second pool blt

1954 accord. to YMCA staff)pic #01SX3 and source #111.

- 8) Bethesda Lutheran (listed in '33 Directory at 505 Adams)? (I received info on this after paintings completed) Following is info obtained in 2005-the 1862 former Presbyterian church was moved to cor. of 5th and Adams after turn of century and named Swedish Finnish Evangelical Lutheran. In 1934 major remodel and name changed to Gloria Dei. 1951 moved to Harrison. (Bldg not pictured in 33 and 50 paintings due to lack of info at the time)(see Gloria Dei history book and Olympian article 9-15-05)

NEW LEGION WAY (former 6th Ave)(west to east)

- 1)*American Legion Hall (219 W. Legion Way, se cor Legion & Water)(blt 1920 to present)(During 1930s, housed ice skating rink)#11p36. (Nat. Guard renting here till 1939 Armory opened) (currently being renovated for offices) Wohleb design.
- 2) Original Olympia Supply Building (nw cor Columbia & Legion)(Built 1928. Oly Supply moved to current location a block south in 1946, as per Jeff Bean)#6p72 (conflict: #23p332 says Talcotts blt in 1926 at nw cor Legion and Columbia)#143 says Oly Supply on Legion, however 1924 Sandborn has Oly Junk Co. in almost its present day location. Conc: See pic#33MM for bldg before 1946 Olympia Supply.(Was Warren's Quick Print, Currently Sofa Gallery)
- 3) Grand Central Grocery Company-(118 Legion Wy W. #143)Ralphs in 1950.
- 4) JC Penney Bldg (nw cor Legion & Cap Wy, 525-27 Cap Wy)#143,#85p38 (Blt-or remodeled- "about 1924". This was the site of the MM Morris Co previously. Morris switched with Penneys and moved to the Martin Building)(Olympian 4-13-77, and Olympia News 11-6-85)(conflict: "Bldg demolished in early 30s and replaced with "old JC Penney Bldg".) Conclusion: In Jan '33 it's not still the original MM Morris Bldg, and is occupied by Penneys.#23p337 says new multi level Penneys store completed late in 1927 by Newell and Phillips. Go with #23. (Currently State Dept of Personnel)
- 5) Hotel Olympian (nw cor Legion and Wash) (opened June 1920 to present)#19p127, #133, #23p301-302. Also #23p333(#143 "155 fire proof rooms, dng rm and coffee shop", Automobile Club of Wa in the lobby as well as Oly Chamber of Commerce)(currently Olympian on the Park, apts.)#85p50pic.
- 6) Kaufman-Leonard Co. Furniture (nw cor Legion and Franklin)(#143 selling furniture, Voss wash. machines and Colonial ranges)(This bldg is in the 1924 Sandborn with Parker home still in place just north)
- 7) Talcott Apartments (sw cor Legion & Cap Way)(built 1923 to present, opened Oct 1 with Oly Lght and Power below, apts above. #154rack73)

NEW MID BLOCK BET. LEGION AND 7TH (west to east)

- 1) *Elks Building (mid block Cap Way facing park bet. Legion and 7th)(opened June 1920 to present) #19p127. (#143 has Anderson Radio Shop in south section of bldg next to Gov Hotel)(currently Jin Jor, Capitale, and apts.)Wohleb design.
- 2) Old Courthouse/Capitol Bldg Eastern Addition (completed 1905 to present)

NEW SEVENTH AVE (west to east)

- 1) Governor Hotel (nw cor Cap Wy & 7th)(In operation in 1930, the newer section of the old Mitchell Hotel was an annex to it. Fire 4-9-43 modified the roofline)(#23p341 const. began summer 1928)(Olympia News 7-5-29 says bldg almost finished and two new stores on main floor.)(see later entries)(Currently Ramada)

NEW BUILDINGS AND HOMES NOT IN VIEW, BUT MAY BE REFERRED TO
(N to S)(*=Wohleb)

- 1) Saint Martin's big brick bldg. completed 1920 to present (see 1899)
- 2) First Lacey City Hall-built 1926. Since moved and is Lacey Museum. 829 1/2 Lacey St. SE #3p79

- 3) Capital Auto Court- #143. "modern cabins with showers and toilets". 1 mile east of city center. 2136 4th Ave E.
- 4) Eagles Hall-Cornerstone laid Oct 28, 1926. 805 E. 4th. #11__ and #23p332
- 5) Second St. Peter's Hospital (on westside at Sherman bet. 4th & 5th)(blt 1924 to present) #19p133 (just off left edge of panel)(#85p34pic)
- 6) Esther Knox Administration Center-(current name, was Old Wash Sch)#1Ap53 "new Wash. School bond issue passed in 1923". 1113 Legion Way SE
- 7) Second Presbyterian Church to be on Sixth and Franklin-When blt and came down?__
See pic #33_____
- 8) Olympia Knitting Mills (ne cor Legion & Jefferson) (1909-1939 closed but bldg still stands)#19p102pic. (currently Artesian Wellness?, 524 Jefferson)_____
- 9) Hollocraft House (314 E. Legion Wy)(blt 1907 to present) just e. of old Sunset Life Bldg.
pic____
- 10)* Olympia Public Library (Carnegie)ne cor Franklin and 7th. Built 1914 Wohleb.
#135p12 (#85p10pic)
- 11)Mowell House (where Wesleyan Institute first stood)200 E. Union. blt 1910. #11____
- 12) Kearney House (YWCA bought in 1949. Built 1920)(220 Union Ave SE)#11_____
- 13)* Thurston Co. Courthouse on Cap. Way across from campus (1100 Cap Wy SE)(built 1930 to present, #133, #19p186)(1977 stopped being used as courthouse) Wohleb design.
- 14)* Second Wm Winlock Miller High School (Cap. Way, eastside facing campus and 11th Ave, Wohleb design, #19p125) 1919-1960 (#85p10pic) (#2p86pic)
- 15) Capital Apartments-bet. 13th & 14th just south of the high school on east Cap Wy.
#85p25pic. (second part completed in 1926. #23p332)
- 16) THE CAPITOL GROUP
 - a)New Legislative Building on the hill, foundation completed 1894, building finished 1927 to present. Assured Oly as capital. #19p119, 150-154pics. (conflict '46 Sandborn says blt '23-'24)Conclusion: go with #19 (Dome info #19p152. Also as per Oly Visitors Center, we have third largest masonry dome after St. Peter's in Rome and St. Paul's in London)(#23p312 says foundation was demolished in 1922 since it was too small)#23p197 says 1st full legislative session held in cap. bldg. in 1929.
 - b) Temple of Justice (Began in 1912, completed 1920)#19p150 (State Library here before going to Pritchard Bldg in 1959)
 - c) Gov's Mansion (blt 1908, oldest of campus bldgs)#85p9 pic (also pics of others) #42p12
 - d) Insurance Bldg (completed 1920, Wilder & White)#19p151(Conflict: Sandborn says completed 1921)Conclusion: Go with #19.
- 17) *CJ Lord Mansion-Wohleb, blt 1923. Donated to become State Cap. Museum in 1939 after Lord's death. (211 21st Ave SW) #2p74. #19p196. Wohleb design
- 18) Lincoln School-Built 1922. #2p88pic. (213 21st Ave SE)
- 19) Cloverfields-#19p126-127. * Hazard Stevens House (1100 Carlyon Ave.)
(Built 1915 Wohleb #135p12)(#2p57 says blt 1914)Conc:____
- 20) Olympia Brewery-modern plant blt in 1933 and expanded greatly after.
pic D.O. 5-27-53.

BUILDINGS AND BUSINESSES NOT YET BUILT BUT SOON (N to S)

1. Cascade Pole-started in 1939 ne cor port peninsula (see newspaper article #38, also see 2001 info)
2. Rockway-Leland built 1941 (sw cor Wash & State)art moderne style #2p63 (pic#50GX4)
- 3.* Spar-(Blt in 1935 after Oxford torn down. Located just east of Chambers Bldg on north 4th.

- Art Moderne style, Wohleb design. (#2p64-65, #2p77.)
4. Baretich Bldg (next door east from Spar) (Not built till after the Spar was blt in 1935.)
----- #2p65pic (Art Moderne Style #2p64-65)
 - 5.* Armory-(515 Eastside St. SE)Blt 1938, Wohleb design #148, #2p71 (WPA project)(#1Ap67 says Old Wash. torn down in 1936 as WPA project)
 6. PNWBell Bldg (sw cor 7th & Wash)(built 1938)#6
 7. North Coast Lines Bus Station (Greyhound) se cor 7th & Cap Way. Built 1937 #2p64.
 8. Temple Beth Hatfiloh. purchased lot in 1937. Dedicated synagogue June 1938.
 9. Brown Derby Restaurant-(w side Cap Wy)Opened 1934 till 1980 #176
 10. Public Lands/Social Security Building (WPA built in 1936, accord to Sandborn map)
#19p186 (now called John Cherberg Bldg.)
 11. State Highway Building (blt 1934 accord. to Sandborn map)(see campus map)
 12. Engineering Building (blt 1939 accord. to Sandborn)(see campus map)
 13. *Wildwood Shopping Center (2822-2229 Cap Wy SE)circa 1938, Wohleb, #2p71

MISC. INFORMATION, OCCURENCES AND LOCATIONS 1933

1. Zabels #20p18-21
2. Old junk cars put on barge and dumped in bay at 20 fathoms #23p357
3. Oly in early 30s becomming a one horse town #23p356.
4. 27 Barber Shops in Oly Directory of 1932!
5. Shoe shine shop of Sam Cozzolino at 517 1/2 Cap. Way. #143
6. Eastside Fuel Co-#143p78 sells coal & old growth and second growth wood__
7. Annual rainfall- 50 inches #143 (1932)
8. Chief products of Thurston Co are lumber, logs, fruit, dairy products, fish, oysters, clams, shrimp, building stone and coal. #143p287
9. Discussion of art deco style evolving into art moderne style in 30s and 40s #2p63-64
10. Rat problem- began in 1926 ended in 1937- #23p399 also p332-333.
11. pic of note #33HX7

INFRASTRUCTURE 1933

1. WATER TRANSPORTATION

- a)Port facts- (est. 1922, lumber loaded on ships in '25, by '27 ninety ships called here. In 1929, 224 ships called. #19p130)
(Apr 1926 new pier brings first deep sea lumber carriers which arrive from Japan. Six destroyers came in summer of '26 pulled by Delta Smyth's Sandman and others. #23p332)
- b)Little freighter Capital exploded in 1937. It had replaced the Chaco on daily voyages to Seattle and Tacoma, leaving from Percival Dock. #23p398.
- c)Last commercial sailing ship to call at port of Oly was bark Conqueror in 1927 headed for S. Africa with locally milled lumber.#24p51pic
- d) Sandman Tug blt 1909. Used in 20s & 30s to deliver oyster barges to packing center near Oyster House. Docked at Percival Dock.#60 newspaper. #98 newspaper.

2. TROLLEYS

- a)(end of trolleys in Sept 1933 #23p378. Birney one man safety car picture) Also drawing of 1933 streetcar #24p71 (Still ran up Harrison and west to Bowman in 1933 accord. to #2p90. This part began in 1914 accord. to Newell article "end of the trolly era" in written '33. The fare had been five cents ever since the horsecar days. Fares stayed at a nickel until after Sept 1933 #23p378)(Birney cars arrived in Oly 1919 #23p297) Conflict: Newell quotes Dec 1, 1933 newspaper saying they took streetcars off today(article in "written '33" file)
Conclusion: Use direct quote, therefore streetcars removed Dec 1, 1933.

- b) Apr 29, 1936 tracks removed, pic #33II
3. TRAINS AND TUNNEL ON 7TH-
- a) ordinance #1190, Feb 7, 1912, repealed the 1890 ordinance and made a concrete subway for the train. Subway pic_____ (1914 subway dance on newly paved 7th above NP's newly completed concrete tunnel #23p266)
 - b) Ordinances from 1912 say railway on East Bay Drive from San Fran south is no longer in service. When did it start? __
 - c) #143 says Pacific Hwy Transport at 701 Legion Way (for rail freight, where tracks bow to the east)
 - d) According to 1932 Directory, existing railroad offices and depots are-
 - 1) Canadian Pacific-224 State Ave W.
 - 2) Great Northern- 224 State Ave W.
 - 3) Northern Pacific-Columbia bet 7th & 9th Ave W (passenger depot until mid 50s when just freight). (see later info)
 - 4) Oregon-Washington Railway and Navigation Co.-407 4th Ave (freight depot only__). (Harriman lines?__)#23p266
 - e) Also see #143p289 for Thurston Co. trains.
 - f) Union Pacific freight depot opened 1916 (Port Townsend Southern closed that year)#175 (Dec. 15, 1914 Union Pacific tracks went into downtown Oly for first time.#157p46. Began active use in 1916 for freight.)
 - g) See valuation map of RRs starting in 1917 (archives). Also pic of Union Pacific RR Chambers Prairie Station #157p42.
 - h) Also log dump train spur. See Oly Supply Co. pic
4. BUSES & TAXIS-
- a) North Coast Transportation Co (526 Wash) buses and motorcoaches#143p12 "motor stages operate all ways out of Olympia" (currently Drees)(Also see OGHTC for earlier info #85p52)
 - b) Thompson Bus Terminal completed Nov 12, 1923. Waiting room on main floor can hold up to 100 people. Apts upstairs. Bus stands built on Wash & 6th Sts. #154 stack 73? (Thompson bought bldg from the state in 1923) Also #23p317
 - c) Al's Taxi (210 4th bet. Wa. and Franklin) pic#33PP, #143 (Also Three Seven Taxi Co and Oly Taxi Co operating)
 - d) School Busses-started to run in 1929 (2). In 1931 they needed three more busses.#1Ap59 (pic #1Ap56- assume these are the 3 busses)
5. ROADS, STREETS, SIDEWALKS, FILL AND HIGHWAYS
- a) Main Street changed to Capitol Way in 1924 (#2p53) Street names standardized this year(1924) e-w avenues, n-s streets. (Main Street still etched on block beyond Maple Park)#23p320
 - b) Sixth renamed Legion Way in 1927 in honor of American Legion Hall at west end of road. The next year sweet gum trees planted from Plum to Central #2p48
 - c) East Bay Drive paving completed 1922 (#23p310)
 - d) 7th Ave has black top from Mar 14, 1914 ordinance #1288.
 - e) Capitol Way still brick in 1933 due to photo #33II, and Wa St till 1943 #19p193, (also Olympia News 52 from 11-6-85)(Good pic of brick on Cap Wy in front of Elks 1933 #154 rack 100)(bricks laid on Cap Wy in 1903 William Weller contractor)photo #33GX7
 - f) 1909-1911 Carlyon fill, 29 blks, much of n. Olympia from Olympia Ave north, part of Deschutes waterway #1p7. (#176 says 1992 study predicts by 2100 this same fill could be submerged due to global warming)
 - g) Olympia has become the junction of the Pacific Highway (which goes south) and the

//

Olympic Highway (which goes to the coast) The junction is at 4th & Cap Wy #143p12

- h) Pacific Hwy dedicated Oct 24, 1923 from Vancouver BC to Salem. Hundreds of cars in giant parade to Salem #154rack78. (500 car caravan #23p317)
- i) Sidewalks are 10 ft wide concrete from Main to Columbia on 7th. (Sidewalks to door of old cap bldg on Wash. St. accord. to contract #2392)
- j) Lots of grading and paving done in 1912. (pic #99WX6) Daily Olympian 4-18-1912 bid for paving 4th from Jefferson to Eastside.
- k) Attempt to change 4th to Oregon Trail Ave #23p320
- l) In 1928 metal stop signs replaced painted warnings on street surfaces. #23p341
- m) Before turn of century West Bay Dr was Farragut Ave #203
- n) #79p181 says 50 blks of cement sidewalks laid downtown 1909

6. BRIDGES, WHARVES, DOCKS & PIERS

- a) 4th Ave reinforced concrete bridge went up in 1921. Early May it opened for traffic. #1p6. #3p72 pic & measurements (Also #23p303) (Steel drawbridge almost not functioning by 1907, #2p94) See pics #33TX4, #33X times 7. (Therefore in 1933 they are using the 1921 concrete bridge which will last till just after the turn of century. Previous bridges blt were 1869, 1881, 1891, and 1905)
- b) see #140, map of harbor in 1933
- c) Percival Dock sold in 1926 to Lovejoy who had motorfreighters instead of steamships. This company was called Puget Sound Freight Lines. (Oly News article by Newell 5-11-77)
- d) #143 (1932 Directory) shows
 - 1) City Dock at foot of Tilton (Sylvester St)
 - 2) Percival Dock at 224 State Ave W.
 - 3) Union Oil Co Dock at foot of Oly Ave W,
 - 4) Oly Oyster Co. Dock at 4th Ave W and Tilton, and
 - 5) Port Docks at foot of n. Wash St.

7. LIGHTS AND WATERWORKS, SEWER AND GARBAGE

LIGHTS

- a) #143 shows Puget Sound Power and Light (L. Faulkner pres.) 601 Cap. Way Telephone #23 (#23p297 says Puget Sound Power and Light took over pioneer Olympia Power and Light in 1919.)
- b) (state of the art boulevard streetlights put in along Cap Wy from 4th to 27th in 1923 accord. to Olympia News 52, 11-6-1985, in "written '33" file) (early in Sept #23p341) (They replaced the old street lights that hung from power poles #23p317)

- c) new downtown traffic lights in 1932- source?__

SEWER AND GARBAGE

- a) attempt at ecology in 1939. #23p408. Garbage still dumped in the bay. Lg number of "Benzine buggies" dumped in 1930 into bay #23p357
- b) #23p332 "In 1926 the old city dump on the Swantown fill, recently converted to a fill operation", was full of rats. (1926 first effort to control rats)

WATERWORKS

- a) water source is Watershed Park area (Moxlie Creek) #19p221. and artesian.

8. AIRPORT

- a) est. 1928. port acquired airport from city in 1963. Beacon on dome?__ #19p131. Also #152 (Gladys Buroker came to Oly in 37__)
- b) #68p24-27. In 1937 runways paved & hangar was a WPA project. In early 30's it

- was just a dirt strip for military purposes and hobby fliers.
- c) Airport dedicated April 13, 1928.
Dec 1928 Santa flew into airport and drove into town to meet kids. #23p340
- d) Boeing Trimotor (From conversation with Museum of Flight, Seattle. chk notes)
9. PARKS AND TREE PLANTING
- a) Priest Point Park- est. 1906 through local efforts #1p9 (Also #8p363)(Descrip. of park and Schmidt involvement #85p15) Also see #196 (to compare- Seward Park is 300 acres, PPP is 330 acres)
- 1) #154 rack 80. "City Gets Title to Priest Point Park" June 20, 1905. Plans for big public picnic where everyone will help clear property. Mayor Carlyon will declare a holiday for that purpose right after 4th of July.
 - 2) #154 rack 80. In 1902 the property was sold to the county for unpaid taxes from 1895 and before. Since part of property lay within the city limits, city was entitled to part of the recovered taxes. The city acquired Mr. Hecker's title rights for \$1,200. County turned over possession of property to city who control it as long as it remains a park.
 - 3) Zoo at park has rat problem in 1926 #23p332
 - 4) Chalet-see info from Drew Crooks in written 1933 file.
- b) Legion Way trees planted 1928 by American Legion, dedicated Nov 11, 1928. #2p48 (also M.O. 11-13-28 in "written '33" file)
- c) Wilder and White plans for Capitol Lake & Cap. Grounds done in 1920s. #19p187
- d) 6 parks listed in 1932 directory #143- 1) Capitol Park (Cap Wy bet 11th & 14th)
2) Ezra Meeker Park- 2 mi. s. of city hall via elec railway. This is likely where Hazard Stevens elk farm had been near the upper falls in Tumwater, where Falls Park is now located. #19p80
3) Priest Point Park 4) State Cap Grounds- w. side Cap Wy bet 11th & 14th.
5) Stevens Field bet 23rd & 24th. (opened 1923 accord. to 9-28-83 Oly News)
6) Sylvester Park
- ** (According to Parks Dept., Harry Fain donated land for a park in 1933. The American Legion was also involved, and it was developed in 1987 as Harry Fain's Legion Park. Listed as Legion Park in 1950 Directory, with 1.32 acres.)
- 10) ACCOMMODATING THE AUTOMOBILE
- a) 7 gas stations on Cap Way in '32 direc. b) Oly becoming "one horse town" #23p356
 - c) Automobile Club of Wa in Hotel Olympian lobby in 1933
 - d) Three main downtown garages- New Gov Garage- 618 Columbia, Liberty Garage- 516 Wash, Sticklin's Garage- 5th Ave at Columbia
 - e) 2 tourist camps for autos in 1932- a) Capital Auto Camp 2136 4th Ave E. b) Priest Point Auto Camp 1 mi. n. of city hall. #143. (What about Olympic Auto Camp in Tumwater? #19p132pic)_____
 - f) A 1917 Olympian article with picture says first Olympia car owner was Mr. WG Ashley, who ran a machine shop. An Oldsmobile in June 1904. On Oct 28, 1904 Mead campaigned from back of this auto #154 rack 54) (The first horseless carriage, or locomobile, run by steam and generated by gas, was displayed in town by two Seattle men Sept 13, 1901. Top speed 25 mph, cost \$1,000.) (Conflict: accord. to Olympian article Aug 5, 1962, Dr. Ingham was first auto driver in Oly-a Rambler- on July 19, 1904. Others said Dr. Strickland was first with a high-wheeled electric car.) More Ashley facts-pic #19p124. Ashley owned first bicycle in 1891 and first motorcycle (a Yale California) in 1903 so logical that he would try for first car. Ingham facts- #23p188 quotes the 1904

newspaper saying Ingham was first.

Conclusion: Go with oldest newspaper article as quoted in #23p188 on July 20, 1904 which says Dr. Ingham is first with a Rambler, Hewitt and Ashley second.)

g) New traffic lights downtown in 1933 #23p362

MILLS AND FACTORIES 1933

1. "Manufacturing includes lumber, shingles, veneer, paper, knitted goods, ready cut houses, sash and doors." #143p12
2. Washington Veneer Plant- 2nd largest on fill. Smokestack 225 ft. high. Pride of town. Dedicated in June 1925 with a wedding and huge ceremony. Torn down in 60s. #170 & #171, #19p130, #3p28. (#19p203 '49 quake fatality from falling brick) (#85p48pic)(an industry that was started, paid for and run by Olympians #148)
3. Olympia Veneer-Incorporated Jan 1921. #3p27-28. Closed 1967, but office still stands at 321 Jefferson (Plant was where pilings still are by Eastbay Dr.)Gustafson supt. '27-'55. (#85p56) (#2p49 When Oly's pop. in mid-thirties was about 12,000- 900 were working in plywood and lumber industries- very imp. businesses.)#170,#171. (#23p310 new industry was the peeling of plywood sheets from Doug Fir logs.)
4. #2p49 says that in mid '30s 12,000 citizens in Oly, about 900 working in above fields
5. Cascade Pole wood preserving site(at ne end of peninsula)Not completed until 1939.
6. #143 Directory of 1932 lists following sawmills & related lumber cos (N to S)
 - a)Buchanan Mill n. end of Westbay Dr.(#85p55)
 - b)Oly Hbr Lumber Mill at 1210 Westbay Dr.
-Westside Log Dump and Olympia Towing 1211 Westbay Dr.
 - c)Panama Shingle at 1110 Westbay Dr.
 - d)Tumwater Lumber Mills at 902 Westbay Dr.
-more Oly Hbr Lumber Mill at 706 and 802 Westbay Dr
 - e)Avery Alder Mill ft of n. Wash,
 - f)Springer Mill at ft of n. Jefferson (#85p38)
b and d are run by Anderson Brothers who started Tumwater Ready Cut Homes in 1922. (1st of its kind in the west)(See 1950 celebration ad in newspaper)
?McCleary Mill blt 1922 (shows on July 1933 Harbor map #140 with log dump going through it. (McCleary becomes Hardel)____ (1924 Sandborn shows McCleary followed by Panama and Olympia-Fir Co to the south, and Buchanan to north)
-See #198 (chart of W Bay industries) Also #206 in "written '33" file. A drawing of major industries in Oly in 1926.
7. "50 or 60 saw and shingle mills in Thurston Co. and as many logging camps sawing up the 5 billion feet of timber in the county" #143p285
8. Olympia Canning Co. (bet Columbia & Cap Wy facing A St.)(packers of Wa. fruits and berries) (1915-1959)("end of N. Columbia#143)Where Sea Mart stood. (#140 also shows 1933 Canning Co only on west side of Cap Way.) (Company will expand to another lg bldg across Cap Way with aerial walkway between later)#68p20
9. Olympia Oyster Co at 320 4th & Brenner Oyster Co further west. (#143p12 says "value of oyster industry in Oly established at one half million dollars per acre. Beds diked and returns will be harvested in next few yrs.")
- 10) Olympia Brewing Company- modern plant constructed in 1933 (D.O. 5-27-53) First beer remarketed Jan. 14, 1934, #19p180.
- 11) Logging operations-South Bay log dump at Woodard Bay began operation Feb 2, 1928 (Took logs from logging town of Vale operated by Weyerhaeuser #195)
- 12) Olympia Knitting Mills- (1909-1939) #19p102 Jefferson bet. 5th & 6th.

SYLVESTER PARK 1933

1. When capitol moved to hill, park went back to founder's name again. Used for circuses, baseball and mini golf #19p78 (also lists famous speakers in park)(Park deeded to state in 1901 and called Capitol Plaza till about 1927)(#154rack87 says Dr Steele calls for Syl Park name to be restored in 1925)
2. 1928 bandstand torn down #2p37, #23p343, #136, #1p119.
3. New bandstand dedicated Aug 13, 1931. (M.O. 8-14-31) How long did it last?(see 1933 written file) All material and half labor donated. Wohleb design free.
4. Fishpond filled in soon after WW2 accord. to GA. When? ____
5. Emma Page fountain dedicated June 29, 1912. Trough later cemented over. (G.A. has info regarding vandalism and rededication)#136, #151p3-53, #179 (pic #33OX8)
6. John Rogers statue dedicated 1903 #151p3-52
7. End of the Oregon Trail marker dedicated 1913 #151p3-52
8. Configuration of pathways____ GA has no records of architectural drawings of layout of park in 30s or 50s. Lights?__ (see drawings I made from 30s & 70s aerials at DOT)
9. #151p3-56 says POSSCA poured walkways and dedicated gazebo in 1976__
10. #151p3-54 also refers to two benches dedicated after WW1, one to Edmund Sylvester and one by the American Disabled Veterans. Marygrace Jennings says both were vandalized and are in pieces waiting for funding to repair or replace.
11. Cannon in Sylvester Park in the 30s- pic #33HX8

LEGISLATURE AND CAPITOL 1933

#66p109-116. (2nd session the following Dec.) Also #23p364-379. (recap of key elements of legislation while in old cap bldg-see "written '99 file "old cap bldg" article)

POLITICAL AND ECONOMIC CLIMATE IN 1933

1. #23p362 Platform of new Gov. Martin over Roland Hartley who had campaigned for a third term. (#23p363 rise in popularity of Vic Meyers)
2. #24p102 City had commission form of Govt.
3. #23p341-First nine member city planning commission formed (Steele, Chandler and Lemon involved)
4. In 1907 established direct primaries for state and local officials. (#6p28 talks about political reforms occurring in old cap bldg such as women's suffrage in 1910 and initiative and referendum in 1912.)(also in written file 1899 under Old Cap Bldg)
- 5) 1930- Legislative redistricting occurs #23p354-355

HUNGER MARCH, LITTLE HOLLYWOOD, CANAL INFO & PROHIBITION IN 1933

HUNGER MARCH-

1. Jan '33 and March '33 hunger marches #19p186, #137 all (Also #19p191 for words to put on signs)(Also #68p13)
2. All spent Tues night in old cap. Women put up in homes. 252 gals of gas were donated. Free breakfast. Left Wed. about noon. Left 9 points with the legislature for consideration. All marchers stayed Tues. night. Threatened to return with many thousands. Front pg 1-18-33 newspaper.

CANAL-

1. Mike Contris article and drawing of canal__ also #68p16(chk Leonard Sowers who started idea)#19p188 (1935 pictoral presentation supplement to the Daily Olympian. has imp. map of canal, on display in #154)(Also Nov 8, 1939)
2. Also #208 talks of great canal idea in Jan 5, 1900.
3. Subject of canal to Black Lake presented to the board #14p77
4. Olympian 2-13-33 says Gov. Martin will support canal if practical
5. Map #68p16.
6. Canal first discussed in 1881 #14p77.

- 4) Lincoln-bet 21st & 22nd (#85p41pic)Opened Sept 1922. #23p310.
towered brick 1890 bldg abandoned.
 - 5)McKinley- Blvd Rd (Blt 1908)
 - 6) Roosevelt-1315 San Francisco (2nd blt 1923)
 - 7)Washington-1101 Legion Way. Completed 1924 #23p319 (Became Knox
Admin Center)
 - 8) orig. Tumwater School opened 1907.
 - 9)St. Mikes School-private (bldg of former Providence Academy. St Mikes
opened 1926-1960s. PA blt in the 1880s #133, #19p59)
 - g)*Olympia Public Library (Carnegie)ne cor Franklin and 7th. Built 1914- Wohleb.
#135p12 (Red Cross in basement)#143 says 131,000 volumes in libraries.
2. Entertainment, Clubs and Sports
- a) Original Thurston Co. Fairgrounds at Cap. Wy and Carlyon. First a bicycle race track
(1899), then a few years later a horse trotting track. Then in 1922 Wildwood
Park developed and a decade later the racetrack was torn down for lots. #2p90)
 - b) Am. Red Cross in basement of Oly Public Library at Franklin & 7th, #143
 - c) Gospel Mission at 217 N. Cap. Wy. #143
 - d) YMCA- 510 Franklin #143p12 talks about new facility (pic & article #79p195)
 - e) Oly Yacht Club-foot of N. Simmons #143 (opened clubhouse in 1930 #19p118.)
 - f) Woman's Club- house completed Oct 29, 1908.
 - g) Tumwater Club-(1908-1955 pic #19p104. 3300 S. Capitol Way)
 - h) Ronald Reagan came to town_
 - i) Olympia Symphony Orchestra-nonprofit in Oly since 1921 (Olympian 4-19-03)
 - j) Mountain View Golf Course- (current Panorama City) developed in 1915. #19p128.
 - k)Lean depression years put an end to semi pro baseball in Oly (Oly News 9-28-83)
 - l) First Boy Scout troop in Oly est. in 1919 at home of Norman Funk (#23p297)
 - m) Accord to #154 rack #82, E. A. Zabel began in 1909 when bought Acme at 216 E.
4th. 4 yrs later bought Rex at 4th and Franklin and Ray at 118 5th Ave. Oct 7,
1924 Zabel and Wilson opened Cap. Theater.
3. Banks and Businesses (see #143)also reference pic #33ll
- a)Drees since 1929 #3p43
 - b) Lowman and Hanford-406 Capitol Way. #143.
 - c)BANKS-#143 According to 1932 Directory-
 - 1)Cap. Nat. Bank, cor Cap Way & 4th.
 - 2)Oly Nat. Bank-422 Cap Wy (Amanda Benek Smith who will become first
woman mayor is the manager of Oly Credit Bureau in this building #143)
(#68p13 says Oly Nat Bank closed in 1932. When reopened?)
 - 3)Cap Savings & Loan-124 5th Ave
 - 4)Oly Bldg & Loan-409 Cap Wy tel:149 (This is Oly Fed. see "written 1933
file)(moved in 1924 to this site. Will bld on Funk Volland site in '67 &
'78)(see written '33 file) Started at 119 4th Ave W., then corner 4th &
Franklin, then 5th & Wash, then in 1924 to this site.
 - 5)Thur. Co. Savings & Loan-4th & Wash.
4. Police and Fire Dept.
- a)(#143 Police Chief Frank Cushman, Fire Chief is Ray Holcomb
Fire Dept at City Hall on w Cap Wy and State)
 - b) Oly's first motorized fire engine was in 1912 pic#154 rack 56 (pic #33JX7 date?)
 - c)#23p398 (In 1937 they bought a Seagrave Combination pumper after Oddfellows
fire)(conflict: earlier says bought Seagrave in 1923 #23p317) Conclusion:___

- d)#143p11. "1932 Olympia Police Dept has eight men, one station and two pieces of motor equipment." (#154 rack 113- great pic of Oly Police Force w/ Cushman) (Jan 1, 1933 Olympian, police go to 12 hr shifts w/10% pay reduction)
- e)1930 bloodhounds among first in state to seek out criminals, moonshine. Olympian article 1-27-2002 in "written '33" file)
- f)Wa State Patrol established August 1, 1921. #23p306 & 312(Also story of first arrest on Boulevard Road)(#154 rack 94- Pic of Wa. State Patrol with motorcycles in 1929)(Great ref. pic of Wa. St. Patrol #33PPP)

5. Communications

- a)Newspapers-The Daily Olympian(2 issues a day) plus Olympia News which is weekly #143p12 (Washington Standard has stopped by now)
- b)telephone-One company-Pacific Telephone and Telegraph- 215 5th Ave.
 - 1)4,458 telephones in service in Oly in 1932. About 1/3 of pop. #143p11
- c)radio-1)Sept 15, 1921 first license to broadcast was issued by fed. govt. to WBZ in Springfield, Mass. Olympia's KGY issued Apr 4, 1922 to Father Sebastian#150 (110th station in US #19p137, also pgs 118-119).
 - 2)(currently known as KGY)(moved from St. Martins to downtown in 1932 #19p118-119 also p195.)(Accord. to station owner Barbara Kerry- 1933 in Cap. Park Bldg upstairs (Hands On bldg), then Rockway-Leland Bldg in 1940, then current site in August 1960.)(#19p195 says 150 ft tower on roof of Rockway-Leland till final move. 200 ft tower put in down at port)#150(#143 says in 1933-"KGL" at 219 Cap. Park Bldg.- only radio station)(KGL is a typo accord. to Kerry. Since 1922 it has been KGY)Accord. to KGY they were only local station until about late 50s when KITN was established.
 - 3)(Anderson Radio Shop in Elks Bldg across alley from n. corner entrance to Gov. Hotel #143)

6. Post Office, Hospitals and Churches

- a)Post Office now in Federal Bldg since 1915. Will stay till Oct 15, 1964 when moved to 900 S. Jefferson St.#82p13
 - 1)Pic of mail car with first woman mail carrier 1927. #154 rack 90.
 - 2)Pic of walking mailman from this time, shows uniform and satchel (flood pic #16p__)
- b)Hospitals in 1932 according to #143-
 - 1) St. Peter's Hospital at 420 Laurel (#23p317-319 "1924 red brick bldg opened." (#202 show 1933 avg cost at St Peters. Board: \$1-\$50 per patient for entire stay. Surgery: \$1-\$25 per patient. XRay: \$3-\$25 per patient.
 - 2) Maxwell Maternity Hospital at 723 4th Ave W. ___ Percival's former home? (see Lola's obit. 5-28-36)(in '02 directory#84, Lurana Percival living at 711 W 4th)Conc:_____
 - 3) #143 says total two hospitals with 115 beds.
- c)#143 lists 20 churches in the city. (Methodist most visible in 1933 panel)

7. Public Art

- a)Soldiers and sailors monument on cap. campus. Authorized by legis. of 1919, approved by Gov. to Victor Alonzo Lewis in 1928 to complete. #23p338

WOMEN'S RIGHTS

(see background info below)

- 1. #23p366-367 Legislature of 1933 had record number of women- 1 in Senate, 5 in House.

DIVERSE CULTURES IN OLYMPIA IN 1933

1. Scandinavians #3p27
- 2a. Chinatown 1913 to 1943, 5 buildings, NW corner of 5th and Water (currently Traditions) _____ #77p3-4pic. (Also #143 lists Sam Fun Locke as manager of Hong Yek Kee and Co. home same as business- 415 Water.)
- 2b. Japanese Town- see Ed Echtle and Drew Crooks.
3. Native Americans-
 - a) Nisqually Reservation 70% condemned in 1917 to become part of Fort Lewis #3p28. (Also descrip. of fishing rights and regs in the 30s)
 - b) #23p312pic- 1921 they came to cap. to plead for fishing rights.
 - c) In 1924 they were given citizenship by Indian Citizenship Act (from Olympian 1999 article about Frank Iyall)

EVENTS AND FACTS AROUND 1933 (local and otherwise)

1. Population-a) In 1930 pop. of Olympia was 11,733. #23p356. (Conflict: 1932 Polk shows population is 15,000 #143p11). (#147 agrees with #23 and shows more detail.)
Conclusion: After looking at chart from #147, a reasonable estimate of pop. in 1933 would be 12,500.
 - b) #143p293- Lacey (formerly Woodland) pop 400
 - c) #143p297- Tumwater pop 800, Yelm 550.
 - d) #143p296- Bucoda pop 700, Tenino pop 900, Rochester pop 500.
 - e) #143p11 "colored pop of Oly" 12 with 150 Japanese and Chinese.
2. Mayor of Olympia- Senator E.N. Steele #66p114
Gov. of Wash-Gov. Clarence D. Martin (descrip. #23p362)
U.S. Pres.- FDR inauguration March 4, '33, landslide victory over Hoover.
3. Olympia Voters- _____
4. U.S.F. Constitution visits Oly June 19-25, 1933 (built 1797) #19p187. Also Olympian Jan 25, 1933.
5. Pet and Doll Parade 1932 #19p210 (But began as a 4H animal parade in 1929)
6. Olympia Brewing Co. builds modern plant in 1933. D.O. 5-27-53
7. In 1933 FDR begins the New Deal program to try to end the depression
8. The Sunset Highway (Snoqualmie Pass I-90) not paved until 1934 accord. to Mountains To Sound publication Feb 2004.
9. New Years Day 1933- 5th annual Polar Bear Swim in Budd Inlet. See newspaper.

BACKGROUND INFO BET. 1899 AND 1933 (U. S. AND FOREIGN EVENTS)

1. 1903 Wright Brothers flight
 2. In 1909 there were 34 cars in Thurston Co. It was called "motoring". (from Transportation file at Oly Library, by Julie Cushman)
 - 3a. Three new states since last panel- Oklahoma '07, New Mexico and Arizona 1912 (total 48)
 - 3b. The sinking of the Titanic Apr 16, 1912
 4. 1914 WW 1 begins in Europe (U.S. fought in 1917-18)
 5. U. S. census of 1920 shows first time majority of Americans live in urban areas
 6. Women's rights-1920 complete suffrage with 19th amendment
 7. Prohibition- 1920 no alcohol with 18th amend. (WA voted for prohibition in 1914 #176)
 8. 1920s start of movie theaters all over the country (called dream palaces)
 9. 1925 Scopes Trial in Tennessee said schools could ban teaching of evolution
 10. c 1925 golden age of radio begins
 11. May, 1927 Lindbergh's solo flight across the Atlantic.
 12. Stock Market Crash and Depression (1929 through the 30s) Oct 24, 1929 Black Thursday.
- ## BACKGROUND INFO BET. 1899 AND 1933 (LOCAL EVENTS)

1. Teddy Roosevelt spoke in Sylvester Park May 22, 1903 (#23p187)
2. movement for Priest Point Park (see Parks and Tree Planting section)
3. dredging and fill-#68p8 (Olympians paid for most of the fill. Out of \$250,000 citizens paid 4/5 #19p121.)
4. 4th Ave Bridge (see Bridges, Wharves, Docks and Piers section)
5. KGY (see Communications section)
- 6a. Women's voting rights- #88 (Frances Sylvester involved in voting rights in 1909)
- 6b. Apr 20, 1912 First class for women will be held as an experiment at YMCA. 4-20-12 D.O.
7. Aug. 21, 1920 FDR spoke in Sylvester Park. (source____)
8. KKK staged 100 ft cross of burning tires on Deschutes Parkway in 1924 #23p319
9. Clock Tower burned 1928 #1p119.
10. First Capital to Capital Yacht Race from Olympia to Juneau June 21, 1928 #23p341
11. One of last chatauquas- held last event across from cap. grounds on vacant lot (fell victim to increased radio sophistication)#23p342
12. #68p17 talks about dream for the port to be a seaplane base for large trans-oceanic flying boats at the northern point of the fill.
13. May 1929 Olympia carpenters secure 5 day work week (from Oly Hist Soc. pamphlet)
14. #23p337 Lindbergh flew 3 times around Olympia's Cap. dome in Sept. 1927.

PEOPLE 1933

- 1) Josephine Corliss Preston (May 26, 1873 Fergus Falls MN-Dec 10, 1958 Renton WA) #88 (section on women in state gov) Not in Oly '32 directory so list as visiting. (Pacific N. Westerner pgs 27-43 by Zola Burnap Irwin). Also #23p326. (Olympian Jan 8, 1978 pgs 4-5 by Jan Stewart)(Territorial State Superintendents by Carol Lind Jan 1976)(State Manual of Wash compiled by Josephine in 1923)(Nat. Reg. of Historic Places document from O.A.H.P. regarding rural public education from early days to 1945)(Recorder Feb 7, 1926) She lived at 1502 Columbia. residence still there.
- 2) Belle Reeves-(Aug 17,1870 Quincy OH -Jan 2, 1948 Olympia)#88(sec. on women in state gov.)pic #33TX7(also info)Good pic #66p104. (Olympian 1-4-48)(Political Pioneers Oct 1983)(bio sketch for Assoc. Press 1944)(Seattle Times 2-13-38)
- 3) Frances Loomis Knox (July 10, 1856 Lima, OH- May 5, 1943 Olympia)#205p501. Obit and family info. during interview.
- 4) Gladys Dawson Buroker-(Mar 16, 1914 Bellingham -Nov 8, 2002 ID)#152 all (pilot, wing walker, parachute jumper, balloonist, flight instructor)Only in Olympia from about 1937-1942 (Jan 42 moved to Weeks Field at Coeur d'Alene #152p106) Olympian 5-29-97.
- 5) Elizabeth Ayer (Oct 13,1897 Bush Prairie-Aug 4,1987 Lacey) died Aug. 4 at Panorama City. (#88p18)(also written '33 file)Graduated in 1921, moved to NYC, Seattle-Edward Ivy Architects. Retired 1970. On Lacey planning commission till 1980. (301 W. 21st blt 1919. Goldberg home since 1941)(Eliz. Ayer-Washington State's First Woman Licensed Architect by Brenda Resell)(Seattle Times 1-18-81 p45)(Eliz. Ayer by Sian Roberts and Mary Shaughnessy)
- 6) Julia Waldrip Ker (July 5,1881Pottawattamie Co. IA-June 30, 1949 Olympia)(first woman attorney, also police judge)In #143 her office is 203 Cap Theater Bldg (obit July 1, 1949 Olympian)#88p18 (also written '33 file)(Admin. Office of the Courts-7-25-05 says 150 women judges and court commissioners in Wash State out of a total of 510. Just women judges-116. U of W Admissions says grad. law sch. class of 2005-65% women. (#18B marriage return #5920)(Sept 1, 1915 Morning Olympian)
- 7) Earl Bean (Jan 1, 1892 Lithuania- Dec 4, 1973 Olympia) Olympia Supply. age 81 at death. (obit Daily O- 12-5-73)(my interview with Ben Bean May 3, 2004, corrects info

- from D.O. 12-5-73 and 5-4-81)(Mike Contris article Aug 1973)
- 8) Gwin Hicks (Feb 24,1910 Tacoma-Mar 19, 2000 Lacey)Pioneer descendent, aviator, flight school administrator, started Zimmerly Airlines, chauffeur for Lacey Murrow (brother of Ed. R)(Hicks Lake)Pres. of Lake Central Airlines (first employee-owned airline) #29p35. (Jan Baker at Flight Museum source Nov 2004 conversation)#212 for mergers. (Olympian 3-29-2000)(Earlier Gwin Hicks was responsible for renaming Hicks Lake. Urban East was Stephen Ruddell's stepson. #189)(Vivian Ingram Hicks by Gwin, edited by Lanny Weaver)(Interview with Gwin by Ann Kilgannon at Lacey Museum Jan 30, 1997)
 - 9) George A. Mottman (Dec 21, 1863 Hesse, Germany-June 13, 1951 Olympia)#3p36, Daily Olympian 1-29-84. Also #148p4. (Phyllis Mottman said he arrived in Oly in spring of 1885. Go with this)was 88 at death. (#205p345, also obit)#211p432. (#23p247 description of store.)(Also memorials for Thurston Co. pg 3)
 - 10) Frank Iyall (Apr 19,1876 Oliquah, WA-Nov1938 Toppenish, WA)(Nisqually, fed. recognition, Indian voting rights in the 20s)(Olympian article- countdown to 2000_) (my conversation with Dan Iyall Oct 25, 2004)(Also photo from Bob Iyall and info from Mike Iyall from our conversation Sept 05)
 - 11) Vibert D. Jeffers (Sept 15,1905 Olympia-May 22,1975 Olympia) (photographer) #2p112, plus bio with pic. from Susan Parish. Obit 5-22-75
 - 12) Matts William Gustafson ("Big Bill")(June 3,1897 Finland- Jan 16,1956 Olympia) (Olympia Veneer supt. 1927-1955) #3p27-28. (see my interview with Norma Hangge spring 2003)#170, #171 (Geo. Talcott Jr. oral history 1979)
 - 13) Joseph Wohleb (Sept 14,1887 Waterbury, CN-June 11,1958 Olympia)(architect)Cap. Theater, Liberty Theater, Jeffers Studio, 2nd High School, Cap. Chevrolet Bldg (1920),Thurston Co. Courthouse, Am. Legion Hall, Spar, Elks Lodge #135 (#143 his office was in 206 Chambers Bldg in 1933)(Also built Port Admin. Bldg in 1944 #68p18)(Daily Olympian 1-29-84) #2p73-77pic. (Stacey Bennett started in 40s after Wohleb. Then Frank Smith in the 60s.)#191pgs 17-18 (lvd in Sylvester Home for a time)(bio file Oly library)

OTHER PEOPLE OF NOTE IN 1933

- 1) Leland P. Brown (born 1893-died Dec 21,1963)Supt. of Oly Sch. Dist.1939. Principal 1919. (LP Brown School)
- 2) Lola Maxwell-(1881-May 27,1936) obit May 28, 1936 page 3. Operated maternity hospital from 1917 to 1936 in former Percival Home. age 55 at death.
- 3) Early Barnes and Zieglers 4) Delta Smyth #68p23
- 5) Kate Stevens Bates 6) Ernest Stofer #193
- 7) Dale Johnson- Tumwater mayor for about 30 yrs (see Jim Brown)
- 8) Ada Mowell #88. Minute women, Woman's Club, Carnegie Library.
- 9) Elizabeth Lord (suggested too late for paintings.) 10) Mark Ewald-patented pear peeler.

OTHER STORIES, QUOTES & EPHEMERA 1933

1. Senator Nifty Garrett from Sumner rides donkey up steps #23p364
2. Tower story #23p342-43 valiant help from Tacoma fire fighters.
3. Stories of Depression Era, like gov. clothes etc #66p109-111.
4. #23p306 Story of first Highway Patrol arrest on Boulevard Road, going 45mph in 1921
5. Story of shooting rats on Cap Way #23p333
6. May 1, 1912 newspaper story of 4 men on 3 yr trip to all states.(in written 33 file)
7. #143p290- describes beauty of the area.
- 8."Enchanted dizzy gallery..." #143p286 9. Olympia Knitting Mills pic #33JX5.
- 10."When the tide is out the table is set" (postcard)

Daring young women in their flying machines

■ **South Sound pioneers:** From training pilots for war to wing walking, women took to the air.

By Lorraine Thompson
The Olympian

The early days of flight were exciting ones, even in southwest Washington — it was the 1920s and 1930s and there was barnstorming, wing walking, daring air shows and preparing young pilots for a possible war.

But not all the adventuring was done by people named Jack and Herb and Roy and Joe.

Some of it was done by people named Vivian and Gladys.

While the history of women in flight is being commemorated by many people around the United States — as the 60th anniversary of Amelia Earhart's disappearance in July, 1937, approaches — Thurston and Lewis counties have their own female pioneer pilots to remember.

Vivian Ingram, who grew up in the South Bay area and came from the pioneer Adair family, became the first woman in southwest Washington to earn her pilot's license on Nov. 5, 1931, in Centralia.

Olympia did not have an airport or flying program at the time.

Ingram had first flown solo more than three years earlier, in 1928, the year Earhart became the first woman to cross the Atlantic as a passenger.

Gladys Buroker followed Ingram by getting her license in 1938, and became the first woman instructor at Saint Martin's College, teaching a pilot's program that the U.S. government barred women from entering.

The two women and their pilot husbands played an important role in developing and promoting aviation in Olympia and southwest Washington, as well as training more than 400 pilots for World War II.

Vivian Ingram Hicks

After growing up in the South Bay area, Vivian Ingram had made her way to Centralia and was working in a coffee shop when excitement about Charles Lindbergh's solo flight across the Atlantic in 1927 began buzzing among her customers.

Centralia was one of the few towns to have a small airport, and pilots would stop there as they flew between Seattle and Portland, sitting in Ingram's coffee shop, talking about flying.

"They'd hardly get through the door and she'd say, 'Pilot!' and she'd talk to them about wind gusts and clouds off the ocean," said Gwin Hicks, who married Ingram a few years later.

A few female pilots were also beginning to make the news, and Ingram's desire to join their ranks grew strong.

Pretty soon, she was talking to every customer who would listen about the flying lessons being given at the Quick Flying Service in Centralia, and some of those headed out to try lessons.

When the service's chief pilot,

Roy Hubert, realized he had a talented recruiter in Ingram, he offered her flying lessons if she would keep up the good work.

She did and he did, and Ingram first flew solo on April 6, 1928.

By the time Gwin Hicks met her in 1929, she was going through ground school to earn her pilot's license.

Hicks, from the pioneer Hicks family in Lacey, had won a free flying lesson at the Quick Flying Service. Actually, the young bachelor had won a free turkey and basketful of groceries in a drawing just before Thanksgiving, and a big farmer with six children had won the flying lesson.

Women

From D1

Gladys Buroker

Gladys Buroker started flying later than did Vivian Ingram Hicks, but she has continued to fly or work in flying-related areas to this day.

Gladys was born in Bellingham and moved to Olympia when her husband, Herb Buroker, was offered a job.

Herb was already a pilot when Gladys met him, and he taught his wife to fly. Gladys had been attracted to flying since she was a little girl.

"I guess I didn't have enough sense to be frightened," she laughs, in a telephone interview from her home in Idaho. "I just always loved things that moved. I guess I should have been a boy. I liked doing things that boys did."

Before marrying Herb, Gladys and a friend had toured the United States on a Harley Davidson motorcycle, which she often motored around Olympia on.

She met Herb while pumping gas and checking tires at a gas station, which "I thought was the best job in the world," she says.

When she learned that Herb was a pilot, she was immediately interested in him and in learning to fly. She found out that flying lessons cost \$20 per hour — she was earning \$5 per week — and "I finally got up the courage to ask him if he could give me 15-minute lessons."

Their relationship blossomed from there.

Gladys soloed on Sept. 22, 1932, bought her own airplane in 1935 for \$400, and earned her pilot's license in 1938.

She would wing-walk as she and Herb barnstormed around southwest Washington, earning money by taking people on plane rides.

"It didn't bother me at all," she says. "I'd walk out to the end of the wing where there was a strut to put your feet in. I'd wave to the people. It wouldn't be long before you'd have a crowd of people out there. It was really a way to attract people."

Gladys also learned to parachute jump, and in later years got involved in hang gliding and hot air ballooning.

"I didn't have anyone to worry about me," she says, of her early family life in Bellingham.

Inevitably, because they were all into flying, she and Herb met the Hickses in Olympia.

When the Buroker-Hicks Flying Service was formed in 1939, the classroom part of the flying instruction was contracted out of Saint Martin's College, while the flying lessons were handled out of the Olympia Airport.

Gladys was a certificated ground school instructor and "there weren't very many of those," she said. So she became the first female instructor ever to teach classes at Saint Martin's.

"It always seemed that as I left my car and headed for my classroom, I was in a sea of men. After a few days, though, fathers and students no longer gave me a look of 'what are you doing here?' They had discovered I had a legitimate reason for being there," Gladys says in the book, "This Place Called Saint Martin's, 1895-1995," by Father John C. Scott.

The students used to call Gladys "Assistant Father" when she taught.

At first the flying program accepted women pilots, and the Buroker-Hicks service sent a few student into the Women's Air Corps.

But after just one year, the U.S. government, which contracted with the service to teach young soldier to fly, banned women from entering the program.

"They didn't want to be put in the position of having to accept women pilots in the military," Gwin Hicks said.

Gladys said the irony of not being allowed to teach women to fly did not strike her hard at the time.

"I can't say I thought a heck of a lot about it. I was so caught up in the war," she says.

After the war and after the Buroker-Hicks Flying Service broke up in Idaho, Gladys and Herb remained in Idaho and started up their own flying service for a while.

When Herb died in 1971, Gladys took up hang gliding and hot air ballooning, "as a way to help her through her grief," says Gladys' daughter, Linda Melhoff, who lives in Forks near an airport, and owns her own plane.

Gladys taught her three children and several of her grandchildren to fly. Her grandson, Michael, first flew solo on Sept. 22, 1982, exactly 50 years after Gladys' own solo flight.

Also during her life, Gladys flew air stunts in a movie on the life of Amelia Earhart, flew at least one of the airplanes hanging in the Boeing Museum of Flight in Seattle, and some of her flying gear is displayed in the museum, Melhoff said.

Gladys, now 83, continued to fly until just a couple of years ago, when an inner ear problem began to make her dizzy, and grounded her.

"I miss it, of course," she says, but she keeps busy building wing "ribs" for small airplanes in a shop at her home. A book she wrote about her adventures, "Wind in My Face," will be published in June.

"My mother would have liked me to do embroidery or something, but that just wasn't for me," Gladys says. "I've had a very rewarding life. I had a super husband and three great children, and I've done the things all my life I always wanted to do."

Hicks offered to trade the farmer, and changed the course of his life with the offer.

Hicks made it down to Centralia on a day off from playing professional baseball and got a tour of the airport from Hubert.

"About this time a cute little girl came out of the hangar with grease on her cheeks. (Hubert) said, 'Meet our aviatrix,' and I said, 'Oh my goodness! A girl!'" Hicks chuckles.

Ingram began helping Hicks with ground school. She was an outgoing, friendly jokester, Hicks said.

"She had a real glib sense of humor, a personality that wouldn't stop," he said.

For instance, the day Ingram



FLYING HIGH: Vivian Hicks became a pilot in the early days of aviation.

5-29-97
Olympian

earned her pilot's license in 1928, the first woman in southwest Washington to do so, she flew perfectly for the inspector who came down from Seattle to test her.

While the man was typing up Ingram's license, she sprinkled sneezing powder into his flight suit, which he had left near the field.

"It was a celebration," Hicks laughs.

Hicks went on to earn his license and married Ingram in 1932 in Olympia, and for a while the newlyweds flew for fun while they worked other jobs in Thurston County.

"I don't know how you describe flying," Hicks said, when asked why he and Vivian were attracted to it. "It's the love, the exhilaration of it, the wind whipping in your face and looking over the side (of the plane) and seeing the country as you've never seen it."

"It's a little better than bungee dropping," he grins.

The local community thought women pilots "were daredevils, and a little flighty, I guess. They thought it was a passing fancy and (the women) were doing it for the publicity," Hicks said. "But Vivian was a good talker, and she would argue it with humor."

Eventually, the Hicks' involvement in flying grew into a business. An airport was finally developed in Olympia, after the state bought an airplane for the governor to travel in. The Hickses paired up with another flying couple, Gladys and Herb Buroker, and started up the Buroker-Hicks Flying Service in 1937, which taught flying.

Vivian operated the administrative part of the business, Gwin focused on public relations and teaching, and Herb and Gladys focused on teaching.

They received a contract in 1939 from the U.S. government to teach flying to Army and Navy students, because the military did not yet have a flight training program.

After war broke out in 1941, the flying service was forced inland by the military, which wanted to control and monitor flying in the coast areas. Buroker-Hicks landed in Pasco for one year and moved near Coeur d'Alene, Idaho, until the war ended.

The flying service disbanded when the government contract to teach pilots was halted.

Vivian and Gwin founded Empire Airlines in Idaho after the war, one of the first commercial airline services in the Northwest, which was bought out about 10 years later.

The Hickses divorced in 1954, and Gwin continued working in the airline industry for years afterward, while Vivian worked for a nonaviation company in Idaho.

She passed away in 1977.

Scandinavians

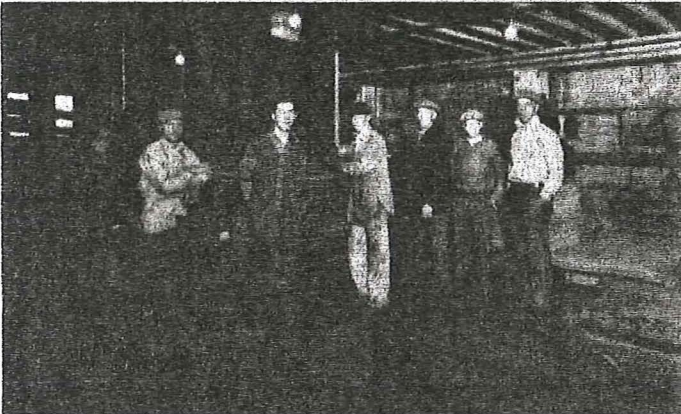
According to George N. Talcott Jr. in an oral history recorded in 1979, the formation of a worker-owned veneer plant was one of the most wonderful examples of camaraderie and friendship he'd ever seen. According to Talcott, the men worked in the logging camps and "couldn't make enough to marry their sweethearts." The men lived in deplorable conditions. After long days logging, the men returned to cold, poorly constructed log shacks and slept wrapped in damp, flea-infested blankets. Talcott went on to explain that a group of men formed Olympia Veneer through sheer hard work and application.

Ed Westman, co-founder of Olympia Veneer, was a Swedish immigrant and active in the Swedish fraternal lodges. He recruited men who were willing to invest in a worker-owned plywood plant. Because of



Bill Gustafson and Art Gustafson stand in the foreman's office at Olympia Veneer Company. -Courtesy of Norma Hange private collection.

mill. At one time the men ran out of nails and hardware, and persuaded local hardware dealer Earl Bean to extend credit. At times, the men received no pay. They worked from dawn to dusk, washed their own clothes and cut each other's hair. A year passed before regular checks were handed out, but by 1923 the company was turning a profit. The volume of work kept plants operating on 24-hour shifts. Production increased from 18 million square feet in 1926 to 21 million square feet in 1927. When the economy was strong the wages were among the highest in town. It was said that if you worked on Saturday you got paid as much as the Secretary of State. During World War II, Olympia Veneer was the



Members of Olympia Veneer Company's "Glue Gang" include Gabe Hoglund, Fred Peterson, Evalo Wentjar, Art Kallman, Walde Forsman and Bill Gustafson. -Courtesy of Norma Hange private collection.

his efforts, Olympia Veneer incorporated in January 1921. Two hundred shares of capital stock were authorized at \$500 each; 125 of Westman's friends bought shares. Those who didn't have cash to invest worked off their debt by helping build the first

largest producer of plywood in the world.

"Big Bill" Gustafson was a Swedish Finn and superintendent of the Olympia plant from 1927 until his retirement in 1955. The workers had great respect for him because he

MORNING-
OLYMPIAN
5-23-12

Mrs. Julia B. Weidrip, who was admitted to the bar last Friday (May 17) tried and won her first case in court yesterday afternoon. As an audience, is, Weidrip had among the spectators a bunch of high browed attorneys who were curious to see how Olympia's first lawyer would do about protecting her client, and as evidence she made food, Judge Crosby before whom the case was heard, gave the verdict to the lady's client. The case was that of Clarence Kieckor vs. William Gray and the charge was trespass. Gray was fined \$1. and costs.

Secretary, Julia B. Weidrip, lawyer
May 23, 1912
Morning Olympian

Hunger Marcher Wishes Labor Finds Struggle For Living Heartbreaking He Could Go to Russia

By JAMES F. ROWE
United Press Staff Correspondent
Disgusted, ill, weary and worried, one of Washington's "hunger marchers" would be "hooked" to death if he could go to Russia tomorrow.
For 30 minutes he sat in torn "tin" coat, blue overalls and heavy packs to repeatedly explain:
"We can't all back and starve."
A typical example of some 1000 said to be here to present their demands for relief to Governor Clarence D. Martin, the worker said he was married and had two babies.
"I've been out of work three years," he said. "Of course there have been some small jobs, but no real money. I've tried hard to find work, too. I'm a 'boomer.' I used to earn \$6 a day. Now they pay \$3, but there ain't no jobs."
The 32-year-old laborer said he was married three years ago. During that period he lost two babies through inability to keep up payments.
"I had some money in a savings bank and loan," he recounted. "We were drawing \$20 a month until they cut

down on it. I sold the balance of \$100 for 60 percent off."
The "marcher" left school when he was in the sixth grade. He explained he didn't like it. In 1910 he was working. He said he was too young for the war. At the last election he voted the "straight" communist ticket, although he didn't belong to the party.
"The government has got to take care of the people," he declared. "When it ceases to, then it ceases to be American."
"It isn't a matter of piling up wealth; it's a matter of feeding a few. Around a dozen control all the wealth in the United States. But the capitalist system is about through. It killed itself through interest in the profit system."
The worker said he and his companions realized "the new system" could be won only gradually.
He added that shorter working hours might solve the problem.
"We don't need any more battleships nor big armies," he complained.
"The officials here are maybe better," he concluded in a complaining tone. "It's a big problem, and I don't know nothing."

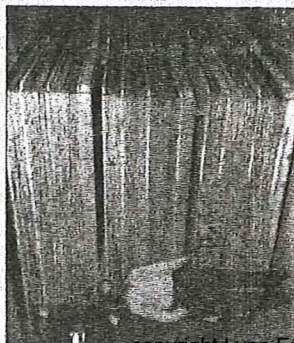
Reeves Service Is Held Here

Flags over the state capitol flew at half staff Monday as persons from all walks of life paid final tribute to Mrs. Belle Reeves, Washington's Secretary of State who died Friday.
She was 77.
High state officials, clerks, stenographers, janitors and other friends not connected with state government filed past the flower-decked bier as Mrs. Reeves' body lay in state in the marble-walled official reception room of the Legislative Building.
State patrolmen in formal blue dress uniforms stood at attention at both ends of the metallic, light gold colored casket.
A state funeral, the first in the history of Washington, was held Monday afternoon in this same building where Mrs. Reeves served the state nearly a quarter of a century—ten years as the first woman Secretary of State.
Final rites were to be in the House Chamber where she served eight regular and special sessions as a member of the House of Representatives from Chelan County.

1-5-48
MORNING
OLYMPIAN

stood during a meeting where layoffs were being discussed and suggested a reduction in shareholders' wages. For, as he said, "the men need the work!" This was during the Depression when there were few orders.

Being loyal paid off for the 70+ shareholders who remained committed to the company. Their capital gain was eight shares of stock worth \$22,000 a share. From shaky beginnings, Olympia Veneer grew to a corporation valued at more than \$15 million. Although the plant closed permanently in 1967, the old office of Olympia Veneer still stands at 321 Jefferson St., and two warehouses remain on the west side of Marine



Bill Gustafson, superintendent of Olympia Veneer Company, is pictured on July 31, 1944. -Courtesy of Norma Hange private collection.

Drive. There are no remnants of the factory left, but the pilings in the flats off Easy Bay Drive serve as a reminder of a cooperative venture that enabled a group of hard-working immigrants to achieve the American Dream.

Olympia's second manufacturer of plywood, Washington Veneer Company, started operations in 1925 at the north end of Capitol Way. Founders were Ed Westman, Joseph L. Peters, C.J. Lord and Millard Lemon. The company grew rapidly,

and in 1929 built a 225-foot-tall brick smokestack. Viewed as a symbol of economic prosperity, a couple was hoisted to the top and married in June 1929. Washington Veneer was sold to the Georgia-Pacific Lumber Co. in the late '40s. The plywood plant was closed in 1967, bringing a local industry, and a piece of history, to an end.